



# Certificate of Analysis

## CANNABUSINESS LABORATORIES, LLC

### Customer:

GM Extraction and Packaging  
100 Corporate Dr Ste C

Lebanon, KY 40033

Received Date **2/22/2023**

COA Released **2/24/2023**

Comments

Sample ID **230220007**

Order Number **CB230220004**

Sample Name **MCT 1200 Bourbon  
Cinnamon**

External Sample ID **7BA24W**

Batch Number

Product Type **Edible**

Sample Type **Edible**

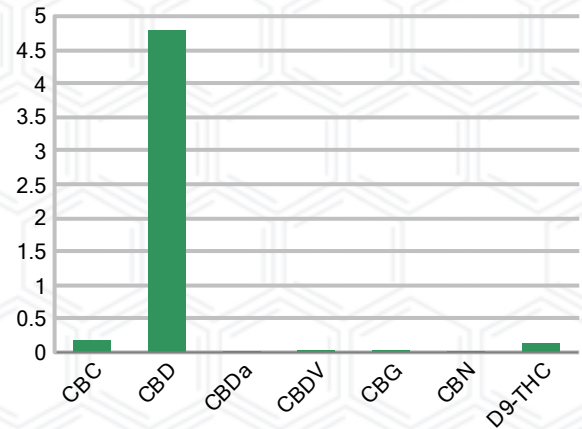
### CANNABINOID PROFILE (Product Size = 30 mL)

Analyte	LOQ (%)	% Weight	mg/mL	mL/unit
CBC	0.01	0.185	1.719	51.57
CBD	0.01	4.792	44.57	1337.00
CBDa	0.01	0.012	0.116	3.48
CBDV	0.01	0.034	0.314	9.42
CBG	0.01	0.031	0.288	8.64
CBGa	0.01	ND	ND	ND
CBN	0.01	0.022	0.203	6.09
d8-THC	0.01	ND	ND	ND
d9-THC	0.01	0.130	1.206	36.18
THCa	0.01	ND	ND	ND
<b>Total Cannabinoids</b>		<b>5.206</b>	<b>48.41</b>	<b>1452.00</b>
<b>Total Potential THC</b>		<b>0.130</b>	<b>1.206</b>	<b>36.18</b>
<b>Total Potential CBD</b>		<b>4.803</b>	<b>44.67</b>	<b>1340.00</b>
<b>Total Potential CBG</b>		<b>0.031</b>	<b>0.288</b>	<b>8.64</b>
<b>Ratio of Total Potential CBD to Total Potential THC</b>				<b>36.95 : 1</b>
<b>Ratio of Total Potential CBG to Total Potential THC</b>				<b>0.24 : 1</b>

### SAMPLE IMAGE



### CANNABINOIDS % Weight



\*Total Cannabinoids refers to the sum of all cannabinoids detected.

\*Total Potential CBD = (0.877 x CBDa) + CBD. \*Total Potential THC = (0.877 x THCa) + THC. \*Total Potential CBG = (0.877 x CBGa) + CBG.

\*Total Potential THC/CBD are calculated to take into account the loss of an acid group during decarboxylation.



*J. Hobgood*  
Laboratory Manager

SIGNATURE

Jamie Hobgood

LABORATORY MANAGER

02/24/2023 9:52 AM

DATE

This product has been tested by CannaBusiness Laboratories using validated testing methodologies and a quality system. Values reported relate only to the product tested. CannaBusiness Laboratories makes no claims as to the efficacy, safety, or other risks associated with any detected or non-detected levels of any compounds reported herein. This Certificate shall not be reproduced except in full, without the written permission of CannaBusiness Laboratories. Photo is of sample received by the lab and may vary from final packaging. The results apply to the sample as received.



# Certificate of Analysis

## CANNABUSINESS LABORATORIES, LLC

### Customer

GM Extraction and Packaging  
100 Corporate Dr Ste C  
Lebanon, KY 40033



**Sample Name:** MCT 1200 Bourbon  
Cinnamon  
**Sample ID:** 230220007  
**Order Number:** CB230220004  
**Product Type:** Edible  
**Sample Type:** Edible  
**Received Date:** 02/22/2023  
**Batch Number:**  
**COA released:** 02/24/2023 9:52 AM

### Potency (mg/mL)

Date Tested: 02/23/2023

Method: CB-SOP-028

Instrument:

<b>0.130 %</b> Total THC	<b>4.803 %</b> Total CBD	<b>5.206 %</b> Total Cannabinoids	<b>48.41 mg/mL</b> Total Cannabinoids
-----------------------------	-----------------------------	--------------------------------------	--

Analyte	Result	Units	LOQ	Result	Units
CBC (Cannabichromene)	0.185	%	0.010	1.719	mg/mL
CBD (Cannabidiol)	4.792	%	0.010	44.57	mg/mL
CBDa (Cannabidiolic Acid)	0.012	%	0.010	0.116	mg/mL
CBDV (Cannabidivarin)	0.034	%	0.010	0.314	mg/mL
CBG (Cannabigerol)	0.031	%	0.010	0.288	mg/mL
CBGa (Cannabigerolic Acid)	ND	%	0.010	ND	mg/mL
CBN (Cannabinol)	0.022	%	0.010	0.203	mg/mL
D8-THC (D8-Tetrahydrocannabinol)	ND	%	0.010	ND	mg/mL
D9-THC (D9-Tetrahydrocannabinol)	0.130	%	0.010	1.206	mg/mL
THCa (Tetrahydrocannabinolic Acid)	ND	%	0.010	ND	mg/mL



*J. Hobgood*  
Laboratory Manager

Jamie Hobgood

02/24/2023 9:52 AM

SIGNATURE

DATE

NT = Not tested, ND = Not detected; LOQ = Limit of Quantitation; <LOQ = Detected; >ULOL = Above upper limit of linearity; CFU/g = Colony forming units per 1 gram; TNTC = Too numerous to count

This product has been tested by CannaBusiness Laboratories using validated testing methodologies and a quality system. Values reported relate only to the product tested. CannaBusiness Laboratories makes no claims as to the efficacy, safety, or other risks associated with any detected or non-detected levels of any compounds reported herein. This Certificate shall not be reproduced except in full, without the written permission of CannaBusiness Laboratories. Photo is of sample received by the lab and may vary from final packaging. The results apply to the sample as received.