



Certificate of Analysis

CANNABUSINESS LABORATORIES, LLC

Customer:

GM Extraction and Packaging
100 Corporate Dr Ste C
Lebanon, KY 40033

Sample ID **230519019**
Order Number **CB230519006**
Sample Name **Muscle cream, Peppermint**

Received Date **5/22/2023**
COA Released **5/25/2023**

External Sample ID **1BE03W**

Batch Number **1BE03W**
Product Type **Topical**
Sample Type **Topical**

Comments

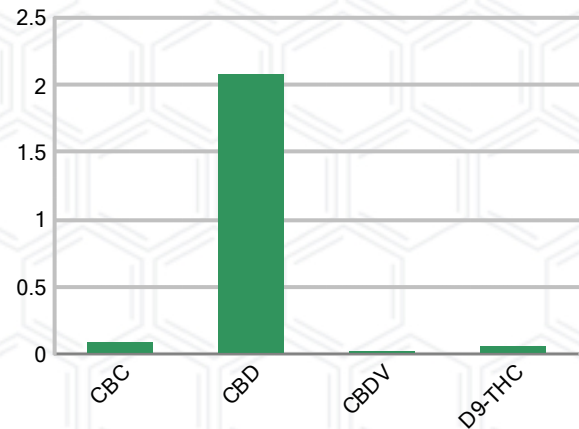
CANNABINOID PROFILE (Product Size = 50 g)

Analyte	LOQ (%)	% Weight	mg/g	mg/unit
CBC	0.01	0.086	0.861	43.05
CBD	0.01	2.078	20.78	1039.00
CBDa	0.01	ND	ND	ND
CBDV	0.01	0.016	0.156	7.80
CBG	0.01	ND	ND	ND
CBGa	0.01	ND	ND	ND
CBN	0.01	ND	ND	ND
d8-THC	0.01	ND	ND	ND
d9-THC	0.01	0.055	0.545	27.25
THCa	0.01	ND	ND	ND
Total Cannabinoids		2.234	22.34	1117.00
Total Potential THC		0.055	0.545	27.25
Total Potential CBD		2.078	20.78	1039.00
Total Potential CBG		N/A	N/A	ND
Ratio of Total Potential CBD to Total Potential THC				37.78 : 1
Ratio of Total Potential CBG to Total Potential THC				N/A

SAMPLE IMAGE



CANNABINOIDS % Weight



*Total Cannabinoids refers to the sum of all cannabinoids detected.

*Total Potential CBD = (0.877 x CBDa) + CBD. *Total Potential THC = (0.877 x THCa) + THC. *Total Potential CBG = (0.877 x CBGa) + CBG.

*Total Potential THC/CBD are calculated to take into account the loss of an acid group during decarboxylation.



J. Hobgood
Laboratory Manager

SIGNATURE

Jamie Hobgood

LABORATORY MANAGER

05/25/2023 8:56 PM

DATE

This product has been tested by CannaBusiness Laboratories using validated testing methodologies and a quality system. Values reported relate only to the product tested. CannaBusiness Laboratories makes no claims as to the efficacy, safety, or other risks associated with any detected or non-detected levels of any compounds reported herein. This Certificate shall not be reproduced except in full, without the written permission of CannaBusiness Laboratories. Photo is of sample received by the lab and may vary from final packaging. The results apply to the sample as received.



Certificate of Analysis

CANNABUSINESS LABORATORIES, LLC

Customer

GM Extraction and Packaging
100 Corporate Dr Ste C
Lebanon, KY 40033



Sample Name: Muscle cream,
Peppermint
Sample ID: 230519019
Order Number: CB230519006
Product Type: Topical
Sample Type: Topical
Received Date: 05/22/2023
Batch Number: 1BE03W
COA released: 05/25/2023 8:56 PM

Potency (mg/g)			
Date Tested: 05/23/2023		Method: CB-SOP-028	
Instrument:			
0.055 %	2.078 %	2.234 %	22.34 mg/g
Total THC	Total CBD	Total Cannabinoids	Total Cannabinoids

Analyte	Result	Units	LOQ	Result	Units
CBC (Cannabichromene)	0.086	%	0.010	0.861	mg/g
CBD (Cannabidiol)	2.078	%	0.010	20.78	mg/g
CBDa (Cannabidiolic Acid)	ND	%	0.010	ND	mg/g
CBDV (Cannabidivarin)	0.016	%	0.010	0.156	mg/g
CBG (Cannabigerol)	ND	%	0.010	ND	mg/g
CBGa (Cannabigerolic Acid)	ND	%	0.010	ND	mg/g
CBN (Cannabinol)	ND	%	0.010	ND	mg/g
D8-THC (D8-Tetrahydrocannabinol)	ND	%	0.010	ND	mg/g
D9-THC (D9-Tetrahydrocannabinol)	0.055	%	0.010	0.545	mg/g
THCa (Tetrahydrocannabinolic Acid)	ND	%	0.010	ND	mg/g



J. Hobgood
Laboratory Manager

Jamie Hobgood

05/25/2023 8:56 PM

SIGNATURE

DATE

NT = Not tested, ND = Not detected; LOQ = Limit of Quantitation; <LOQ = Detected; >ULOL = Above upper limit of linearity; CFU/g = Colony forming units per 1 gram; TNTC = Too numerous to count

This product has been tested by CannaBusiness Laboratories using validated testing methodologies and a quality system. Values reported relate only to the product tested. CannaBusiness Laboratories makes no claims as to the efficacy, safety, or other risks associated with any detected or non-detected levels of any compounds reported herein. This Certificate shall not be reproduced except in full, without the written permission of CannaBusiness Laboratories. Photo is of sample received by the lab and may vary from final packaging. The results apply to the sample as received.