



Certificate of Analysis

CANNABUSINESS LABORATORIES, LLC

Customer:
CKD 3933 LLC
3933 Plainfield Ave NE
Grand Rapids, MI 49525

Received Date **8/29/2024**
COA Released **8/30/2024**

Comments

Sample ID **240823318**
Order Number **CB240823006**
Sample Name **Bickett & Boone 30 FS Gummies**

External Sample ID

Batch Number

Product Type **Edible**
Sample Type **Edible**

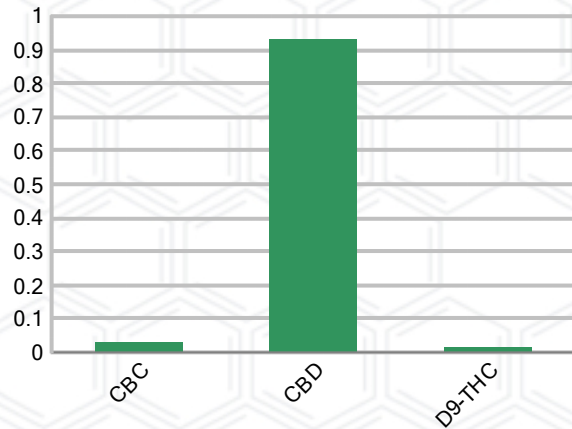
CANNABINOID PROFILE (Product Size = 3.5 g)

Analyte	LOQ (%)	% Weight	mg/g	mg/unit
CBC	0.01	0.031	0.314	1.10
CBD	0.01	0.932	9.320	32.62
CBDa	0.01	ND	ND	ND
CBDV	0.01	ND	ND	ND
CBG	0.01	ND	ND	ND
CBGa	0.01	ND	ND	ND
CBN	0.01	ND	ND	ND
d8-THC	0.01	ND	ND	ND
d9-THC	0.01	0.015	0.151	0.53
THCa	0.01	ND	ND	ND
Total Cannabinoids		0.979	9.785	34.25
Total Potential THC		0.015	0.152	0.53
Total Potential CBD		0.932	9.320	32.62
Total Potential CBG		N/A	N/A	ND
Ratio of Total Potential CBD to Total Potential THC				62.13 : 1
Ratio of Total Potential CBG to Total Potential THC				N/A

SAMPLE IMAGE



CANNABINOIDS % Weight



*Total Cannabinoids refers to the sum of all cannabinoids detected.

*Total Potential CBD = (0.877 x CBDa) + CBD. *Total Potential THC = (0.877 x THCa) + THC. *Total Potential CBG = (0.877 x CBGa) + CBG.

*Total Potential THC/CBD are calculated to take into account the loss of an acid group during decarboxylation.



J. Hobgood
Laboratory Manager
SIGNATURE

Jamie Hobgood
LABORATORY MANAGER

08/30/2024 12:20 PM
DATE

This product has been tested by CannaBusiness Laboratories using validated testing methodologies and a quality system. Values reported relate only to the product tested. CannaBusiness Laboratories makes no claims as to the efficacy, safety, or other risks associated with any detected or non-detected levels of any compounds reported herein. This Certificate shall not be reproduced except in full, without the written permission of CannaBusiness Laboratories. Photo is of sample received by the lab and may vary from final packaging. The results apply to the sample as received.



Certificate of Analysis

CANNABUSINESS LABORATORIES, LLC

Customer

CKD 3933 LLC
3933 Plainfield Ave NE
Grand Rapids, MI 49525



Sample Name: Bickett & Boone 30 FS Gummies

Sample ID: 240823318

Order Number: CB240823006

Product Type: Edible

Sample Type: Edible

Received Date: 08/29/2024

Batch Number:

COA released: 08/30/2024 12:20 PM

Potency (mg/g)			
Date Tested: 08/29/2024		Method: CB-SOP-028	
Instrument:			
0.015 %	0.932 %	0.979 %	9.785 mg/g
Total THC	Total CBD	Total Cannabinoids	Total Cannabinoids

Analyte	Result	Units	LOQ	Result	Units
CBC (Cannabichromene)	0.031	%	0.010	0.314	mg/g
CBD (Cannabidiol)	0.932	%	0.010	9.320	mg/g
CBDa (Cannabidiolic Acid)	ND	%	0.010	ND	mg/g
CBDV (Cannabidivarin)	ND	%	0.010	ND	mg/g
CBG (Cannabigerol)	ND	%	0.010	ND	mg/g
CBGa (Cannabigerolic Acid)	ND	%	0.010	ND	mg/g
CBN (Cannabinol)	ND	%	0.010	ND	mg/g
D8-THC (D8-Tetrahydrocannabinol)	ND	%	0.010	ND	mg/g
D9-THC (D9-Tetrahydrocannabinol)	0.015	%	0.010	0.151	mg/g
THCa (Tetrahydrocannabinolic Acid)	ND	%	0.010	ND	mg/g



J. Hobgood
Laboratory Manager

Jamie Hobgood

08/30/2024 12:20 PM

SIGNATURE

DATE

NT = Not tested, ND = Not detected; LOQ = Limit of Quantitation; <LOQ = Detected; >ULOL = Above upper limit of linearity; CFU/g = Colony forming units per 1 gram; TNTC = Too numerous to count

This product has been tested by CannaBusiness Laboratories using validated testing methodologies and a quality system. Values reported relate only to the product tested. CannaBusiness Laboratories makes no claims as to the efficacy, safety, or other risks associated with any detected or non-detected levels of any compounds reported herein. This Certificate shall not be reproduced except in full, without the written permission of CannaBusiness Laboratories. Photo is of sample received by the lab and may vary from final packaging. The results apply to the sample as received.