



# Certificate of Analysis

**CANNABUSINESS LABORATORIES, LLC**

**Customer:**

CKD 3933 LLC  
3933 Plainfield Ave NE

Grand Rapids, MI 49525

Received Date **8/29/2024**

COA Released **8/30/2024**

Comments

Sample ID **240823316**

Order Number **CB240823005**

Sample Name **Bickett & Boone 50 FS Gummies**

External Sample ID

Batch Number

Product Type **Edible**

Sample Type **Edible**

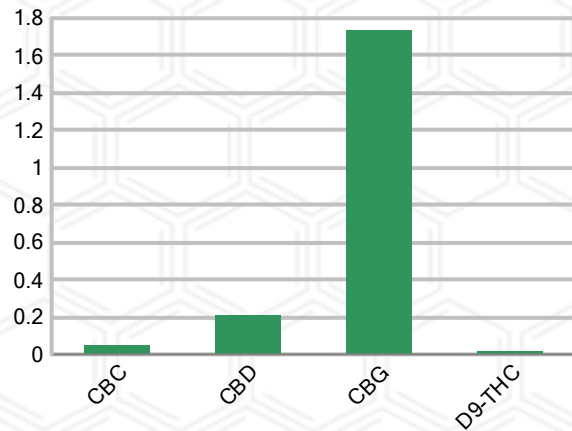
## CANNABINOID PROFILE (Product Size = 3.5 g)

Analyte	LOQ (%)	% Weight	mg/g	mg/unit
CBC	0.01	0.049	0.486	1.70
CBD	0.01	0.209	2.085	7.30
CBDa	0.01	ND	ND	ND
CBDV	0.01	ND	ND	ND
CBG	0.01	1.736	17.36	60.76
CBGa	0.01	ND	ND	ND
CBN	0.01	ND	ND	ND
d8-THC	0.01	ND	ND	ND
d9-THC	0.01	0.017	0.169	0.59
THCa	0.01	ND	ND	ND
<b>Total Cannabinoids</b>		<b>2.010</b>	<b>20.10</b>	<b>70.35</b>
<b>Total Potential THC</b>		<b>0.017</b>	<b>0.169</b>	<b>0.59</b>
<b>Total Potential CBD</b>		<b>0.209</b>	<b>2.085</b>	<b>7.30</b>
<b>Total Potential CBG</b>		<b>1.736</b>	<b>17.36</b>	<b>60.76</b>
<b>Ratio of Total Potential CBD to Total Potential THC</b>				<b>12.29 : 1</b>
<b>Ratio of Total Potential CBG to Total Potential THC</b>				<b>102.12 : 1</b>

## SAMPLE IMAGE



## CANNABINOIDS % Weight



\*Total Cannabinoids refers to the sum of all cannabinoids detected.

\*Total Potential CBD = (0.877 x CBDa) + CBD. \*Total Potential THC = (0.877 x THCa) + THC. \*Total Potential CBG = (0.877 x CBGa) + CBG.

\*Total Potential THC/CBD are calculated to take into account the loss of an acid group during decarboxylation.



*J. Hobgood*  
Laboratory Manager

SIGNATURE

Jamie Hobgood

LABORATORY MANAGER

08/30/2024 10:21 AM

DATE

This product has been tested by CannaBusiness Laboratories using validated testing methodologies and a quality system. Values reported relate only to the product tested. CannaBusiness Laboratories makes no claims as to the efficacy, safety, or other risks associated with any detected or non-detected levels of any compounds reported herein. This Certificate shall not be reproduced except in full, without the written permission of CannaBusiness Laboratories. Photo is of sample received by the lab and may vary from final packaging. The results apply to the sample as received.



# Certificate of Analysis

## CANNABUSINESS LABORATORIES, LLC

### Customer

CKD 3933 LLC  
3933 Plainfield Ave NE  
Grand Rapids, MI 49525



**Sample Name:** Bickett & Boone 50 FS Gummies

**Sample ID:** 240823316

**Order Number:** CB240823005

**Product Type:** Edible

**Sample Type:** Edible

**Received Date:** 08/29/2024

**Batch Number:**

**COA released:** 08/30/2024 10:21 AM

### Potency (mg/g)

Date Tested: 08/29/2024

Method: CB-SOP-028

Instrument:

<b>0.017 %</b>	<b>0.209 %</b>	<b>2.010 %</b>	<b>20.10 mg/g</b>
Total THC	Total CBD	Total Cannabinoids	Total Cannabinoids

Analyte	Result	Units	LOQ	Result	Units
CBC (Cannabichromene)	0.049	%	0.010	0.486	mg/g
CBD (Cannabidiol)	0.209	%	0.010	2.085	mg/g
CBDa (Cannabidiolic Acid)	ND	%	0.010	ND	mg/g
CBDV (Cannabidivarin)	ND	%	0.010	ND	mg/g
CBG (Cannabigerol)	1.736	%	0.010	17.36	mg/g
CBGa (Cannabigerolic Acid)	ND	%	0.010	ND	mg/g
CBN (Cannabinol)	ND	%	0.010	ND	mg/g
D8-THC (D8-Tetrahydrocannabinol)	ND	%	0.010	ND	mg/g
D9-THC (D9-Tetrahydrocannabinol)	0.017	%	0.010	0.169	mg/g
THCa (Tetrahydrocannabinolic Acid)	ND	%	0.010	ND	mg/g



*J. Hobgood*  
Laboratory Manager

Jamie Hobgood

08/30/2024 10:21 AM

SIGNATURE

DATE

NT = Not tested, ND = Not detected; LOQ = Limit of Quantitation; <LOQ = Detected; >ULOL = Above upper limit of linearity; CFU/g = Colony forming units per 1 gram; TNTC = Too numerous to count

This product has been tested by CannaBusiness Laboratories using validated testing methodologies and a quality system. Values reported relate only to the product tested. CannaBusiness Laboratories makes no claims as to the efficacy, safety, or other risks associated with any detected or non-detected levels of any compounds reported herein. This Certificate shall not be reproduced except in full, without the written permission of CannaBusiness Laboratories. Photo is of sample received by the lab and may vary from final packaging. The results apply to the sample as received.